



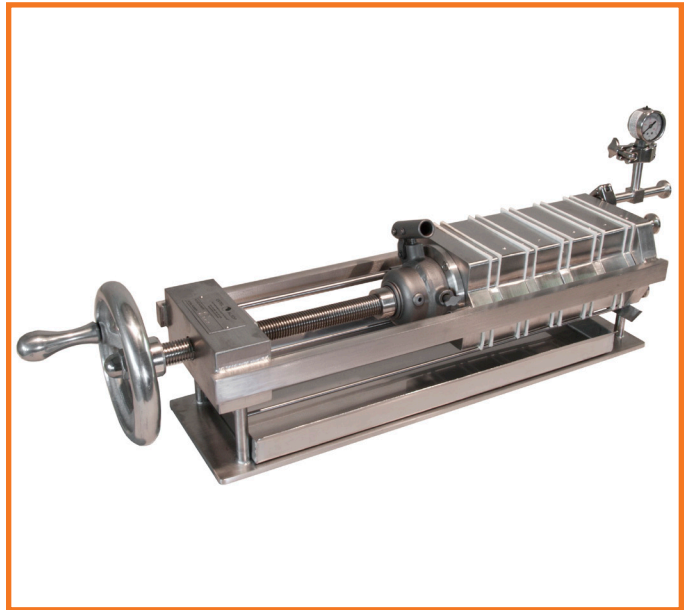
# ERTELALSOP

THE FIRST NAME IN LIQUID FILTRATION™

## MODEL 4S

These 4-inch square (10 cm square) plate and frame filters are one of the most economical models ErtelAlsop manufactures. Sized for bench top mounting, these filters are able to accept up to twenty (20) filter pads, they are designed to work in a wide range of high efficiency, ultra-fine filtration applications, and have excellent scale-up capabilities.

As with all ErtelAlsop plate and frame filter presses, the Model 4S has the same component flexibility as other models, accepts various thickness filter media, and is internally ported eliminating the need for gaskets as well as concerns about compatibility and cross-contamination.



### STANDARD FEATURES

- 316L Stainless Steel
- BioClean™ Outlet Plates
- Internal Ports
- 1/2-inch Tri-Clamp Fittings
- Hand Hydraulic Closure
- Bench Top Mounted

### OPTIONAL FEATURES

- Electro polished 20 Ra Finish
- Variable Inlet Frame Thickness
- Polypropylene Plates and Frames
- Thorough Wash Capability
- Weld-Free Plate Design
- Pressure Gauges
- Tubing
- Pump
- Motor

### APPLICATIONS:

- Small Batch Cosmetics
- Cough Syrups
- Flavors
- Fragrances
- Small Volume Parenterals
- Food and Beverage R & D

### PRODUCT TESTING

Product testing is always available either at your facility, through our network of distributors, or at our in-house laboratory.

### PILOT TESTING - RENTALS

For in-plant testing and scale-up procedures, ErtelAlsop offers a variety of lab filters for rent. A portion of rental fees can be applied to the purchase of your full production filter.

## FILTER MEDIA

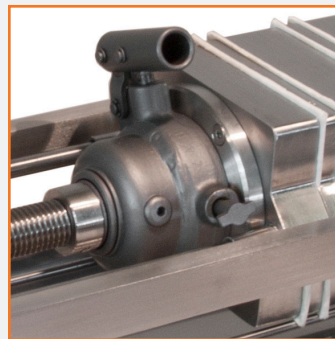
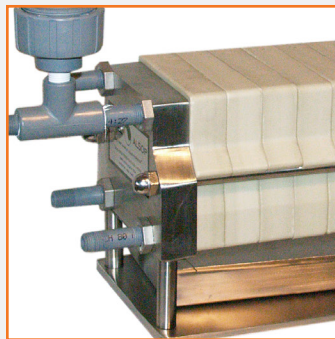
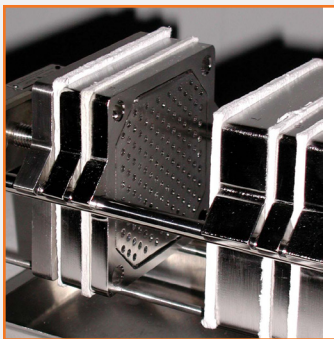
As with all ErtelAlsop plate and frame filter press models, media is available for any application and/or operating condition, and is chosen based on your specific operating conditions, the performance required by the filtering media, and criteria given to us by you and/or by sample processing we do in our lab.

ErtelAlsop offers the widest varieties of filter media including 100% cellulose pads, cellulose and diatomaceous earth pads, cellulose and Celpure® diatomaceous earth pads, cellulose and perlite pads, and cellulose and activated carbon pads.

All filter pads are manufactured to very high standards for a wide range of applications in the pharmaceutical, chemical, cosmetic, electric utility and food and beverage markets. ErtelAlsop also offers a Validation Guide to assist in the validation of its filter pads in your process. The Validation Guide contains information regarding raw materials, extractables, and general information about the product. The combination of ErtelAlsop "P" grade filter pads and ErtelAlsop's BioClean™ plate and frame filter press design, can help to simplify your depth filtration validation now more than ever.

## 4S SPECIFICATIONS

Standard Height	9.8 in	(0.25 m)
Standard Width	7.9 in	(0.20 m)
Range of Length	9.8 - 19.7 in	(0.25 - 0.5 m)
Plate Dimension	4 in square	(103 mm)
Ports	4 internal	
Area/Filter Sheet	0.084 ft <sup>2</sup>	(0.0078 m <sup>2</sup> )
Cake Vol. - 12.5 mm inlet	0.017 gal	(0.067 l)
Cake Vol. - 25 mm inlet	0.048 gal	(0.182 l)
Cake Vol. - 37.5 mm inlet	0.072 gal	(0.273 l)
Cake Vol. - 50 mm inlet	0.096 gal	(0.364 l)
Batch Size	0.34 oz - 2.6 gal	(10 ml - 10 l)
Flow Rate	Up to 1 gpm	(3.7 lpm)



For additional  
product information visit  
**ErtelAlsop.com**

**Technical Bulletin 4S-PF-16**

## ErtelAlsop

132 Flatbush Avenue  
Kingston, NY 12401 US

ErtelAlsop.com  
800.553.7835 Telephone  
845.853.1526 Fax

Keep in touch.

Visit us at [ErtelAlsop.com](http://ErtelAlsop.com)

Your Local Distributor

Nova Filtration Technologies Inc.  
1367 Osprey Drive Unit 1  
Ancaster ON L9G4V5

[info@novafiltrationtech.com](mailto:info@novafiltrationtech.com)

Tel: (905) 304-8157

[www.novafiltrationtech.com](http://www.novafiltrationtech.com)